

# The Bedford II

# AMERICAN HERITAGE®

HOMES



Elevation A with Siding



Elevation A with Brick



Elevation B with Siding



Elevation B with Brick

# The Bedford II

The Bedford II is a four bedroom, two and a half bath luxurious Colonial Home. Natural light comes streaming into the living room and expansive dining room through the large front and side windows.

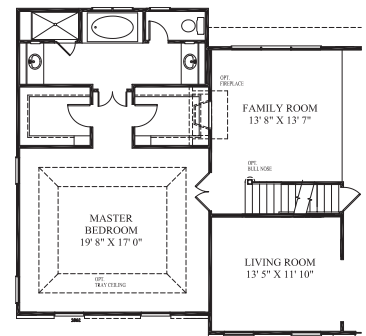
The family room, breakfast, and kitchen are open and flow together for family time. A first floor generous laundry/mud room has two closets. The oversized upstairs master suite features “his and hers” closets. This sophisticated home has many options including a downstairs master suite, extended family room, and a morning room.

9201 ELYS FORD ROAD  
FREDERICKSBURG, VA 22407  
www.AHHVA.com  
1-800-892-4747  
*A Pruitt Company*

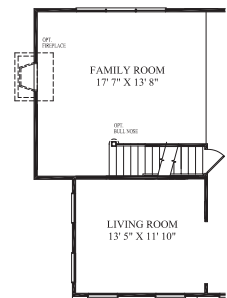
Photographs, renderings, and floor plans are for representational purposes only and may not reflect the exact features or dimensions of your home. All dimensions are subject to field variation. Features may be altered to keep pace with builder's continuous design updates. All options in your home must be Specified in your contract option selection sheet. Prices subject to change without notice.



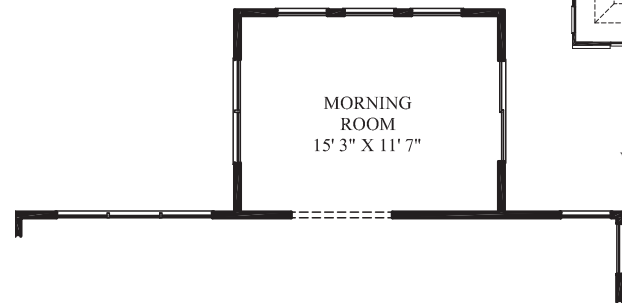
# The Bedford II



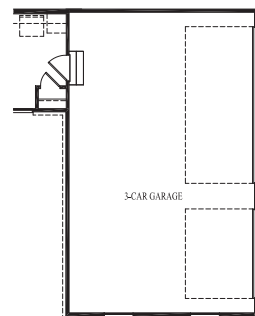
Partial First Floor Plan w/ Opt. First Floor Master



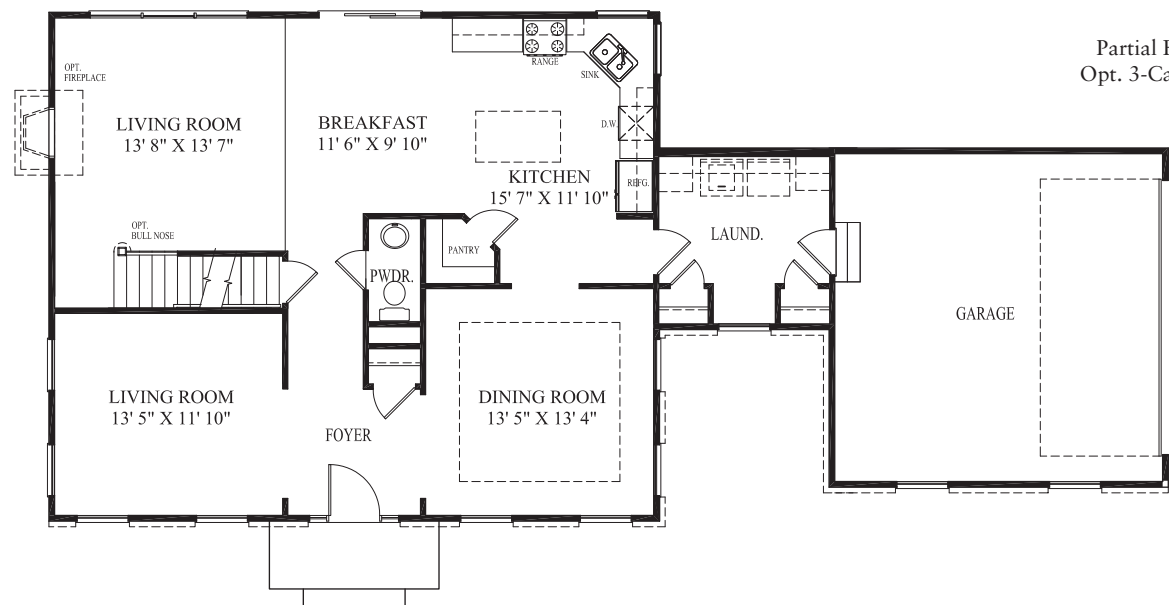
Partial First Floor Plan w/ Opt. Extended Family



Partial First Floor Plan w/ Opt. Morning Room



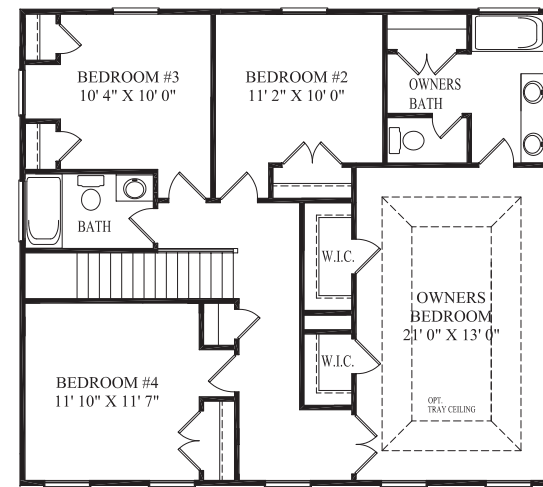
Partial First Floor Plan w/ Opt. 3-Car Side Load Garage



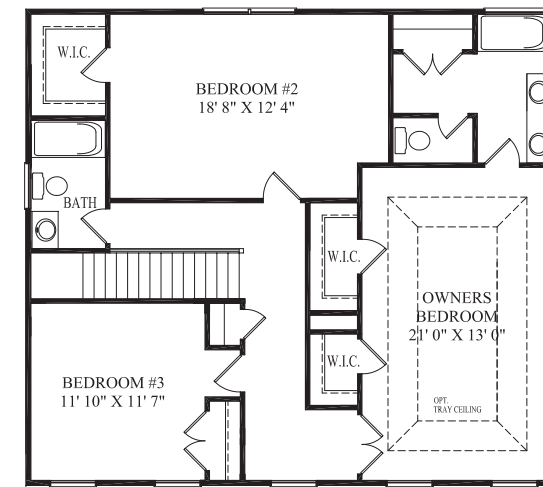
Partial First Floor Plan w/ Elevation B

Partial First Floor Plan w/ Opt. Open Stair

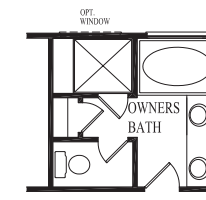
## First Floor Plan



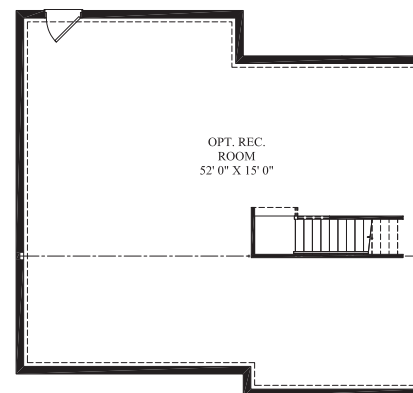
## Second Floor Plan



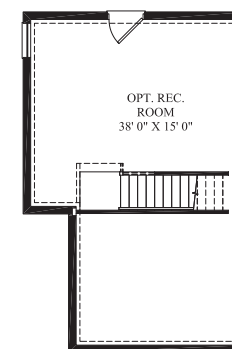
Second Floor Plan w/ Alternate 3 Bedroom



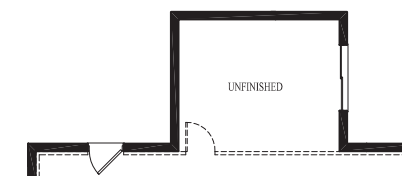
Partial Second Floor Plan w/ Opt. Master Bath



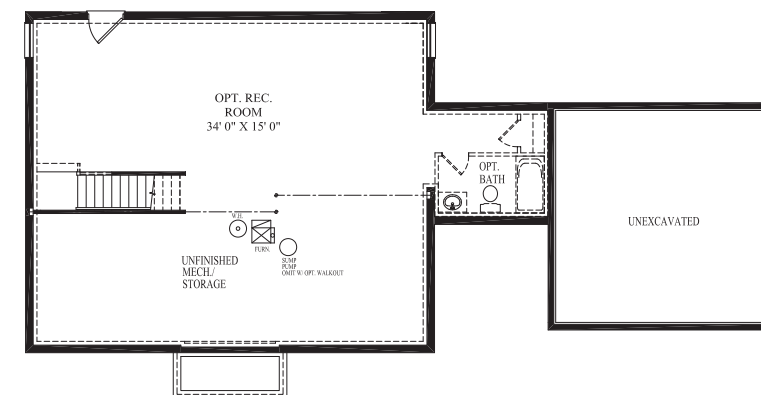
Partial Basement Floor Plan w/ Optional First Floor Master Bedroom



Partial Basement Floor Plan w/ Optional Ext. Family



Partial Basement Floor Plan w/ Optional Morning Room



## Optional Finished Basement